



Applications

Permits easy handling of a hydrant servicing unit's intake hose and prevents the hose scraping along the ground.

Sizes Available

Available to suit 80mm (3") and 100mm (4") diameter hoses.

Features

- Plated Steel. Synthetic Rubber wheels.
- Reduce hosed wear due to generous ground clearance.
- Swivelling castors for easy movement.



Specification

The trolleys are designed to give the intake hose generous ground clearance, which minimises the likelihood of the hose scraping along the ground. This reduces damage and costly replacements. The Fluid Transfer Hose Trolley is designed to be used in conjunction with the Fluid Transfer 'Easilift' which enables the heavy Hydrant Dispenser Intake Hose to be handled easily.

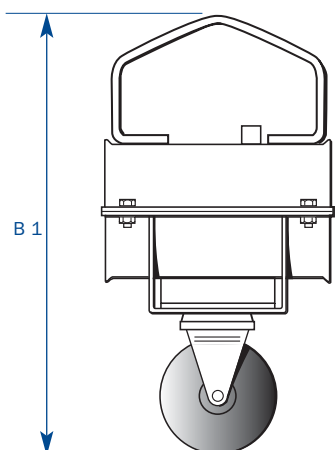
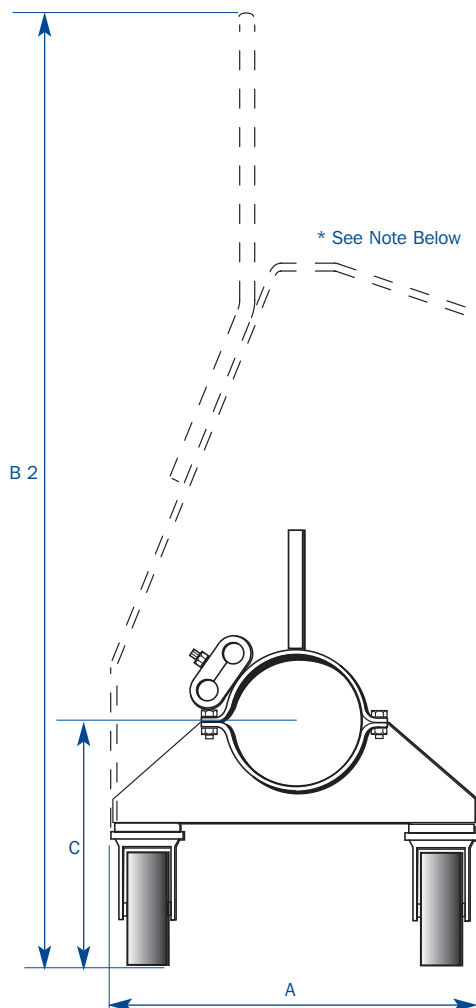
Fluid Transfer Hose Trolley's can be supplied in the standard 2-wheel variant or the more stable 4-wheel version to suit requirements. Hose trolleys are also available with special mounting brackets to suit hydraulic stowage rails and can be supplied in two different sizes to accommodate various diameters of intake hose.



Hydrant Dispenser Intake Hose Trolley

Part No DB3323-1/DB5770

fluid transfer international



Technical Data

The body of the unit is constructed from steel whilst the castors are synthetic rubber. The combination of the two materials gives a robust long lasting solution.

The trolleys are fabricated in steel and are far more robust and durable than the cast aluminium versions which are prone to metal fatigue and fracture. The swivelling castors are fitted with 100mm diameter solid tyre wheels which can be easily removed and replaced (single bolt fixing).

The ends of the hose clamp are flared to prevent sharp edges from damaging the hose. Fixing brackets are attached to the upper clamp for supporting fuel and air sense lines.

Service

Fluid Transfer International offers a full support service. Due to the robust nature of the product repair is very unlikely however the castors may wear down. These are available individually and can be replaced by a single bolt.

Options

The trolleys are available in a number of configurations depending on options selected. Other pairings can be offered to provide the end user with tailored operational solutions at competitive pricing.

Part Number	Hose Manufacturer	Number of wheels	Intake Hose diameter
DB5770	Elaflex	2	80mm
DB3323-1	Elaflex	2	100mm
DC21400	Elaflex	4	100mm
DC22272*	Elaflex	2	100mm

*Suits Hydraulic Lift Rail

Dimensions

Part	A	B1	B2*	C	Weight
Hose Trolley 80mm	300mm	425mm	668mm	220mm	4.3 Kg
Hose Trolley 100mm	320mm	395mm	668mm	220mm	7.5 Kg

FTi's policy of continuous improvement means we reserve the right to alter designs and specifications without notice. The descriptions, illustrations and product references in the datasheet are for information purposes only and are not binding. (updated August 07)